

A Test of Your New Understanding of Umpiring with ACCSO

**To run the test, simply keep clicking the mouse,
the question will display,
followed by the possible answers
and finally the correct answer.**

**If you should have any questions, support is available
by sending an email to umpire_support@cricket-sw-france.org**

1. According to the presentation, with umpiring, what is there “No Substitute” for ?

Hands on experience

Knowledge of MCC Laws

Patience

ACCSO Regulations

1. According to the presentation, with umpiring, what is there “No Substitute” for ?

Hands on experience



Knowledge of MCC Laws

Patience

ACCSO Regulations

2. Which one of the following helps to establish your credibility as an umpire?

Being a member of Member of the Association of Cricket Officials

A Sun Hat

Arrive in good time

Using Match Cards

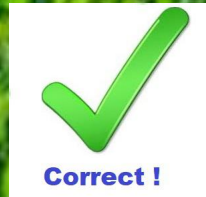
2. Which one of the following helps to establish your credibility as an umpire?

Being a member of Member of the Association of Cricket Officials

A Sun Hat

Arrive in good time

Using Match Cards

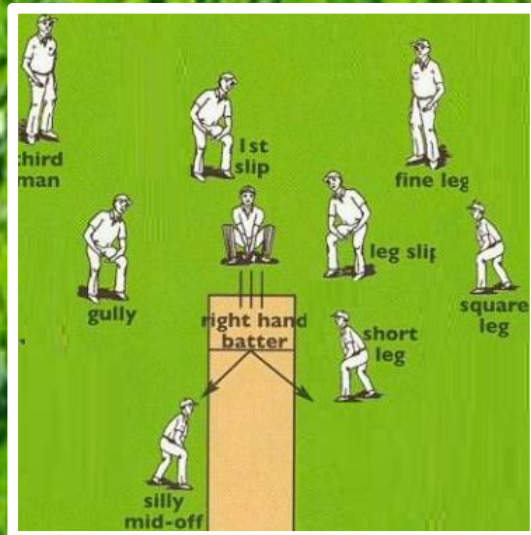


3. Do the following images show a situation where “No Ball” should be called?



Yes

No



Yes

No

3. Do the following images show a situation where “No Ball” should be called?



Yes



Correct !

Over stepping

No

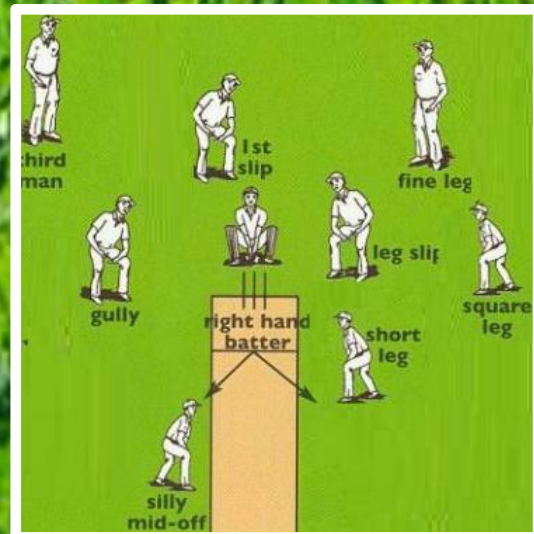
Yes



Correct !

More than 2 fielders behind square

No



4. Do the following images show a situation where “No Ball” should be called?



Yes

No



Yes

No

4. Do the following images show a situation where “No Ball” should be called?



Yes



Correct !

Wicket keeper encroaching

No

Yes



Correct !

Back foot outside return crease

No



5. How long before the start of a match should the toss be completed?

5 minutes

15 minutes

10 minutes

2 minutes



5. How long before the start of a match should the toss be completed?

5 minutes

15 minutes

10 minutes

2 minutes



Correct !



6. For which post match form is the umpire entirely responsible for its provision, completion (including signatures) and communication to ACCSO?

The Match Report

The Team List

The Match Entry Form

The Sportmanship Award



6. For which post match form is the umpire entirely responsible for its provision, completion (including signatures) and communication to ACCSO?

The Match Report

The Team List

The Match Entry Form

The Sportmanship Award



Correct !

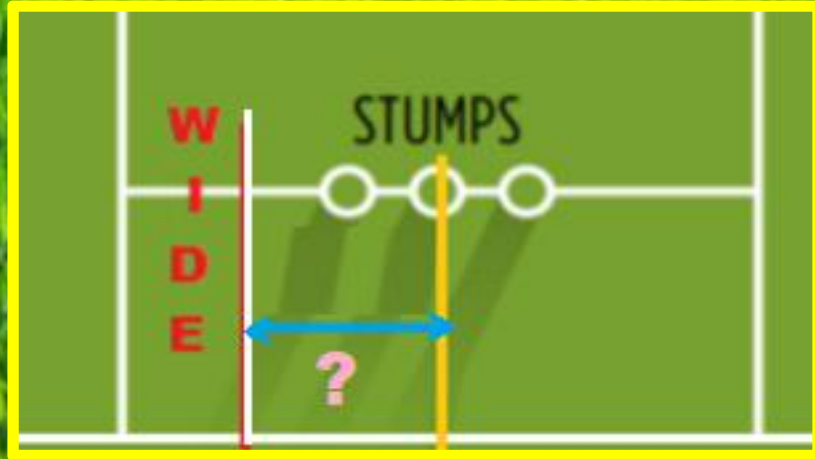
7. Which is the Umpire signal for a Short Run?



7. Which is the Umpire signal for a Short Run?



8. What is the distance from the middle stump to the line for an off-side wide is painted?



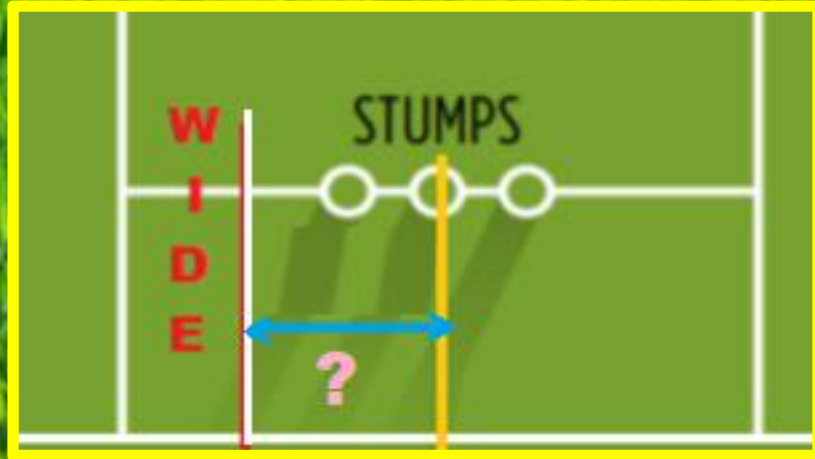
60 cm

50 cm

70 cm

89 cm

8. What is the distance from the middle stump to the line for an off-side wide is painted?



60 cm

50 cm

70 cm

89 cm



Correct !

9. A typical over

Ball 1, Off-side Wide

Ball 2, Goes through to the keeper

Ball 3, 1 Leg bye

Ball 4, Foot fault (no ball), also batsmen / batswomen take a bye

Ball 5, Batters take one run

HOW MANY BALLS ARE LEFT IN THE OVER ?

2

3

1

4



9. A typical over

Ball 1, Off-side Wide

Ball 2, Goes through to the keeper

Ball 3, 1 Leg bye

Ball 4, Foot fault (no ball), also batsmen / batswomen take a bye

Ball 5, Batters take one run

HOW MANY BALLS ARE LEFT IN THE OVER ?

2

3



1

4



10. According to the the regulations, how many scorers are the minimum required at a match?



A player from the batting team

A player from each team.

A non-playing person from the home club

A player working the scoreboard

10. According to the the regulations, how many scorers are the minimum required at a match?



A player from the batting team

A player from each team.

A non-playing person from the home club

A player working the scoreboard



11. What is the maximum number of overs each bowler may bowl during an innings?



20% of the innings total

15% of the innings total

7

8

11. What is the maximum number of overs each bowler may bowl during an innings?



TOTAL	236
WICKETS	8
OVERS	39
1st INNS	256

20% of the innings total

15% of the innings total

7

8



Correct !

12. What is the maximum number of deliveries each bowler may bowl during an innings?



42

55

No maximum

78

12. What is the maximum number of deliveries each bowler may bowl during an innings?



42

55

No maximum

78



Correct !

13. What should happen if, on arrival at a match, a Pool umpire finds there is no Home Umpire?

The Pool umpire can choose whether to stand alone or abandon & ask to re-schedule the match

The match is automatically abandoned

The match must go ahead with the Pool umpire standing alone

Not sure



13. What should happen if, on arrival at a match, a Pool umpire finds there is no Home Umpire?



The Pool umpire can choose whether to stand alone or abandon & ask to re-schedule the match

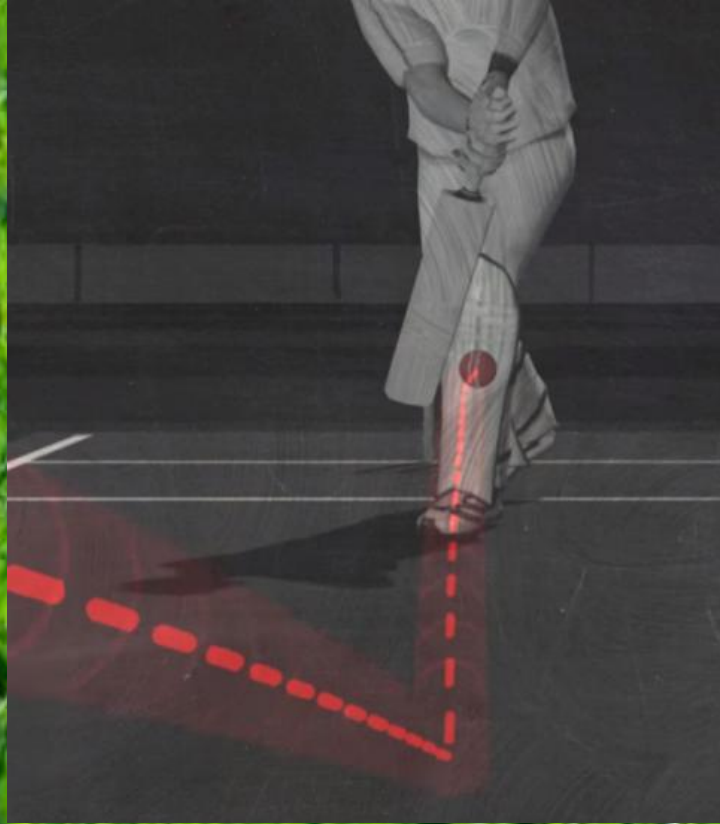


The match is automatically abandoned

The match must go ahead with the Pool umpire standing alone

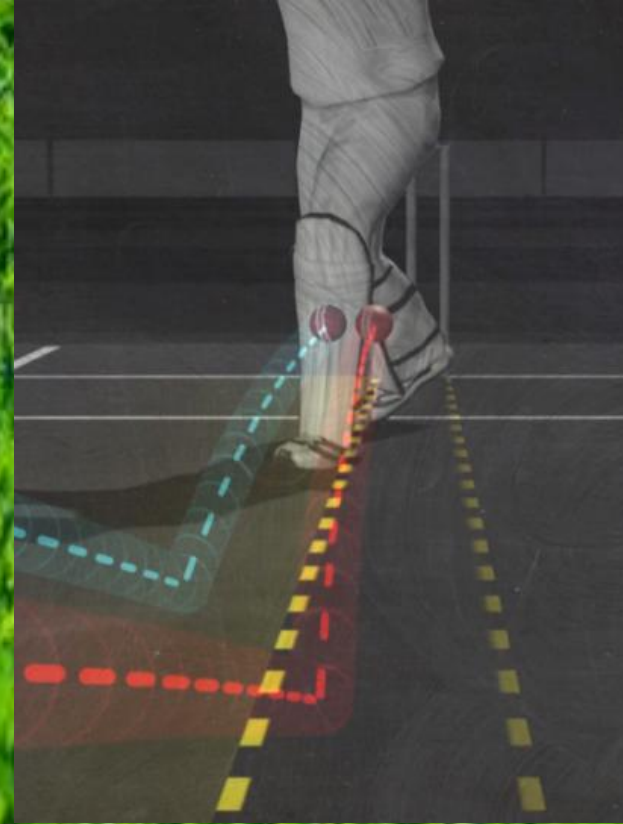
Not sure

15. Can the striker be out LBW with deliveries shown in these images



Yes

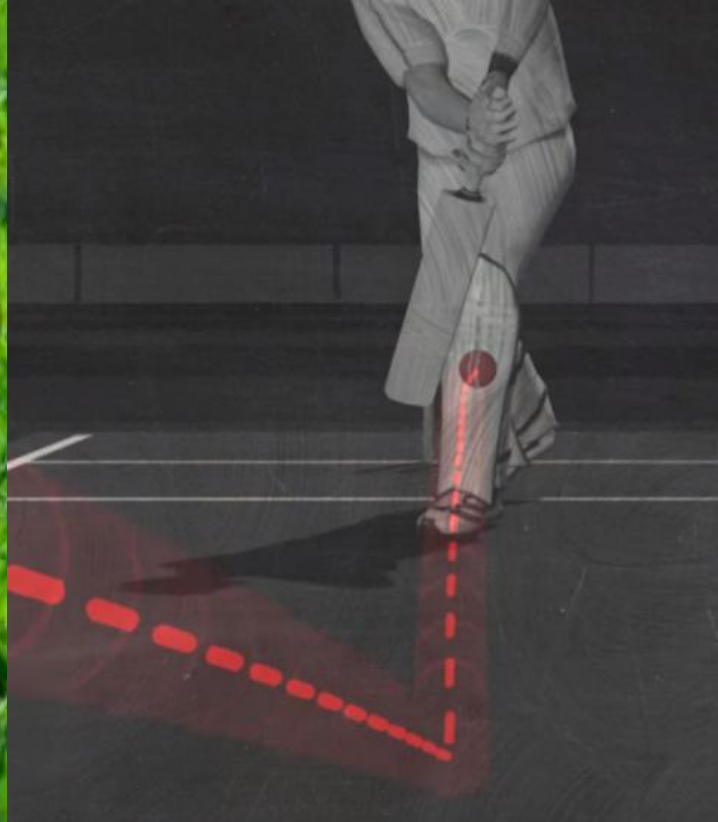
No



Yes

No

15. Can the striker be out LBW with deliveries shown in these images



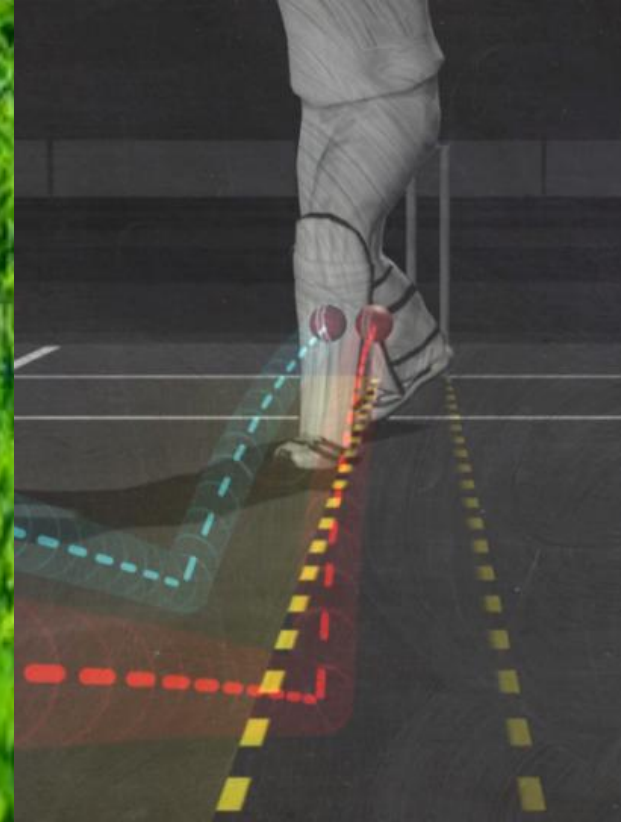
Yes

No



Correct !

Pitches outside leg stump



Yes

No



Correct !

16. Who is responsible for making sure that each match is played in the Spirit of Cricket ?



The umpires

The team captains

The players

All of the above

16. Who is responsible for making sure that each match is played in the Spirit of Cricket ?



The umpires

The team captains

The players

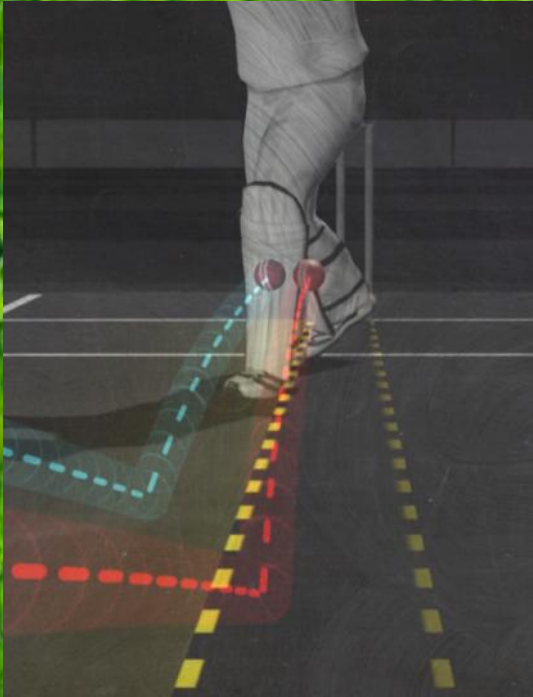
All of the above



Law 1.4

Not a Law but all share some of the responsibility

17. Is it possible for a striker to be out LBW from a No Ball ?



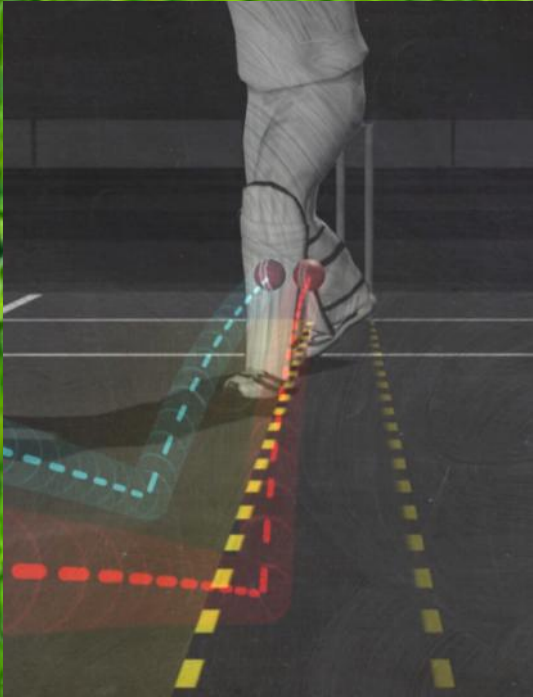
Yes, but only if they are not attempting to play the ball

No

Yes

Yes, but only if a foot fault

17. Is it possible for a striker to be out LBW from a No Ball ?



Yes, but only if they are not attempting to play the ball

No

Yes

Yes, but only if a foot fault



Correct !

18. Which of the following is not a situation where the ball is automatically “dead”?



The ball is settled in Wicketkeeper's gloves

The ball crosses the boundary

A fielder pick's up then drops the ball

The bowler drops the ball

18. Which of the following is not a situation where the ball is automatically “dead”?



The ball is settled in Wicketkeeper's gloves

The ball crosses the boundary

A fielder pick's up then drops the ball

The bowler drops the ball



Correct !

19 . Which of the following is a change to ACCSO regulations for 2020



League matches are the typical 40 overs per team

Deliveries pitching off the mat are to be called No Ball

A Match Report is to be completed after each match

T20 matches are to be 15 overs per team

19 . Which of the following is a change to ACCSO regulations for 2020



League matches are the typical 40 overs per team



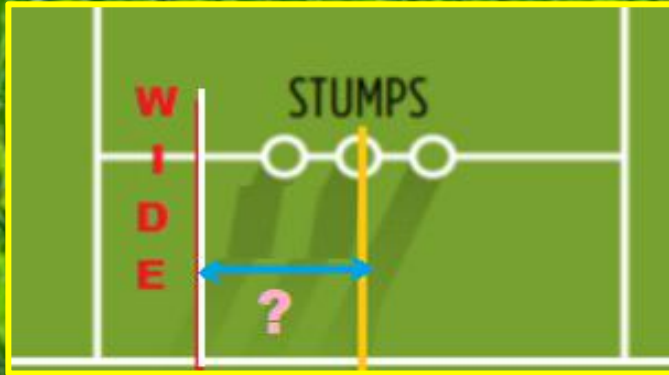
Correct !

Deliveries pitching off the mat are to be called No Ball

A Match Report is to be completed after each match

T20 matches are to be 15 overs per team

20. What should the umpires do if they find the crease marking are not clearly painted?



Immediately abandon the match

Accept the situation and carry on

Ask the home team to re-paint the lines

Use chalk to improve the lines

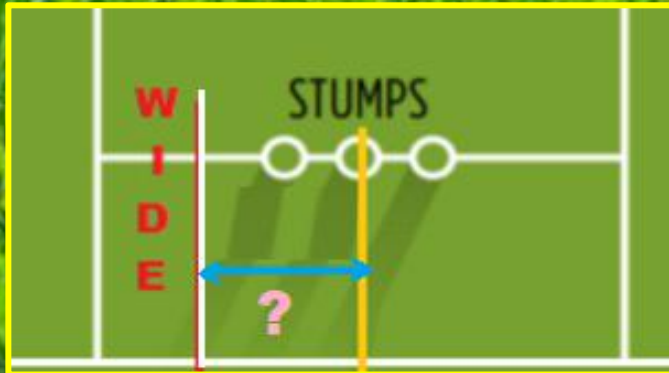
20. What should the umpires do if they find the crease marking are not clearly painted?

Immediately abandon the match

Accept the situation and carry on

Ask the home team to re-paint the lines

Use chalk to improve the lines



21. Which of these fielders should NOT appeal for LBW ?



Wicketkeeper

Bowler

1st Slip

Deep Square Leg

21. Which of these fielders should NOT appeal for LBW ?



Wicketkeeper

Bowler

1st Slip

Deep Square Leg



Correct !

22. A striker is given “not out” after an appeal for LBW. What should the umpire do the first time there dissent shown regarding the decision by one of the fielding team?



Speak to other umpire

Speak to the fielder

Ignore it

Speak to the feilding team captain

22. A striker is given “not out” after an appeal for LBW. What should the umpire do the first time there dissent shown regarding the decision by one of the fielding team?



Speak to other umpire



Correct !

This is a level 1 offence and it requires a warning given to the Captain of the fielding team and encompasses the whole team. See Law 42.2 (or 42.3 - 42.5 for more serious dissent)

Ignore it

Speak to the feilding team captain

23. What should the umpire do the next time there is dissent regarding a decision from one of the fielding team?



Speak to other umpire

Award 5 penalty runs to the batting team

Ignore it

Speak to the feilding team captain

23. What should the umpire do the next time there is dissent regarding a decision from one of the fielding team?



Speak to other umpire

Award 5 penalty runs to the batting team



Correct !

This is a repeat of a level 1 offence and follows a warning given to the Captain of the fielding team encompassing the whole team. See Law 42.2 (or 42.3 - 42.5 for more serious dissent)

Ignore it

Speak to the feilding team captain

24. Leg side wide: can a wide be called if the ball touches the striker?



Yes

No

24. Leg side wide: can a wide be called if the ball touches the striker?



Yes

No



Correct !

25. Which of the following is not considered unfair play?



Speaking as bowler runs in

Changing the condition of the match ball

Deliberately distracting the striker

Fielder in front of wicket walking towards the striker as the bowler runs in

25. Which of the following is not considered unfair play?



Speaking as bowler runs in

Changing the condition of the match ball

Deliberately distracting the striker

Fielder in front of wicket walking towards the striker as the bowler runs in

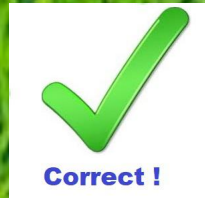


Correct !

26. Which is the Umpire signal for 5 Penalty Runs awarded to the batting team?



26. Which is the Umpire signal for 5 Penalty Runs awarded to the batting team?



27. Is the batsman / batswoman out, (out of his ground) ?



Yes

No, the bat is over the popping crease

27. Is the batsman / batswoman out, (out of his ground) ?



Yes



Correct !

The bat must be on the ground.

No, the bat is over the popping crease

28. Which is each batter's ground ?



Striker, Blue area behind the popping crease

Striker, Blue and Grey areas

Non-striker, Gold area

Non-striker, Gold area behind the popping crease

28. Which is each batter's ground ?



Striker, Blue area behind the popping crease



Correct !

Striker, Blue and Grey areas

Non-striker, Gold area

Non-striker, Gold area behind the popping crease



Correct !

29. Should this bouncer be called for No Ball?



Yes

No

29. Should this bouncer be called for No Ball?



Yes



Correct !

ACCSO local rule, higher than the shoulder

No

30. What does ACCSO regulations say is a “beamer”?



A delivery not pitching but goes over the batters head

A delivery not pitching but is over the batters waist

A delivery not pitching but is over the batters shoulder

A delivery not pitching but hits the batter

30. What does ACCSO regulations say is a “beamer”?



A delivery not pitching but goes over the batters head

A delivery not pitching but is over the batters waist

A delivery not pitching but is over the batters shoulder

A delivery not pitching but hits the batter



Correct !

31. A delivery, not played by, and does not touch, the striker, passes all the close fielders and the batsmen / batswomen take a run.
When is it not a bye?



The ball is called a Wide

There is a “foot fault” No Ball

There is a “throwing” No Ball

There is an “encroaching” No Ball

31. A delivery, not played by, and does not touch, the striker, passes all the close fielders and the batsmen / batswomen take a run.
When is it not a bye?



The ball is called a Wide

There is a “foot fault” No Ball

There is a “throwing” No Ball

There is an “encroaching” No Ball



32. Does a delivery need to touch the striker's leg, but not the bat, to result in a leg bye?



Yes

No

32. Does a delivery need to touch the striker's leg, but not the bat, to result in a leg bye?



Yes

No



Touching any part of the body is considered a leg bye

Thank you for going through the Test
about
Umpiring with ACCSO

**Please now email the address below
and confirm you have
completed the post training test
umpire_support@cricket-sw-france.org**